

AC INFINITY

UIS™ CONTROL PLUG

USER MANUAL

WELCOME

Thank you for choosing AC Infinity. We are committed to product quality and friendly customer service. If you have any questions or suggestions, please don't hesitate to [contact](#) us. Visit www.acinfinity.com and click contact for our contact information.

EMAIL

support@acinfinity.com

WEB

www.acinfinity.com

LOCATION

Los Angeles, CA

MANUAL CODE ADA2207X1

PRODUCT

UIS™ CONTROL PLUG

MODEL

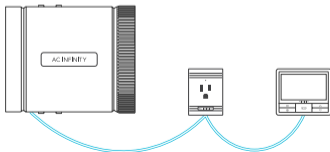
AC-ADA3

UPC-A

819137023741

PLUG COMPATIBILITY

This plug requires connecting to an UIS™ controller to operate. The UIS controller issues on and off commands to the product, delivering or cutting off power. Please check that the devices plugged into this product turn on when they receive power and turn off when power is cut. Certain devices may require pressing a power button to turn on after receiving power, and therefore cannot be controlled by any outlet plug. Not intended for use as a standard outlet.



NOT COMPATIBLE

MANUAL INDEX

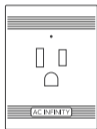
Compatibility	Page 4
Manual Index	Page 5
Product Warning	Page 6
Product Contents	Page 7
Key Features	Page 8
Powering and Setup	Page 9
Other AC Infinity Products	Page 11
Warranty	Page 12

PRODUCT WARNING

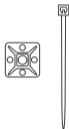


1. Ensure your power source conforms to the electrical requirements of this product.
2. Do not plug devices into this product that exceed the voltage and wattage rating: 120-240V AC, 1800W, 15A
3. Check your local code restrictions for additional safety measures that may be needed for a proper code compliant installation.
4. Read all instructions before installing and using this product.
5. If you are unfamiliar or have doubts about performing this product's installation, seek the services of a qualified, trained, and licensed professional. Inappropriate installation will void this product's warranty.
6. Do not attempt to hardwire this product. Performing any retrofitting actions may result in personal injury and/or electrical damage, and will void this product's warranty.
7. This product must not be used in potentially hazardous locations such as flammable, explosive, chemical-laden, or wet atmospheres.
8. Do not cover power cords with rugs or other fabric materials.
9. Do not insert or allow fingers or foreign objects to enter any openings as it may cause electric shock, fire, or damage to this product. Do not block or tamper with this product in any manner while it is in operation.
10. Do not operate this product if it malfunctions, has been dropped, or is damaged in any manner.

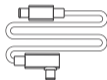
PRODUCT CONTENTS



CONTROL
PLUG*
(x1)



WIRE
TIE
(x1)



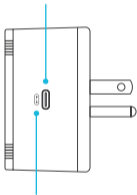
UIS EXTENSION
CORD (M-M)
(x1)

*(120-240V AC, 1800W, 15A)

KEY FEATURES

VERSATILE CONTROL

Capable of pairing any AC-powered device to a UIS controller to function alongside existing UIS devices.



UIS™ COMPATIBLE

Able to connect with smart controllers from the UIS platform to access temperature, humidity, cycle, and scheduling.

POWER DISPLAY

Brightly illuminated indicator light presented directly above plug to confirm the device is receiving power.

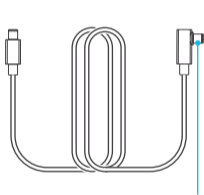


HEAVY-DUTY

Durable plastic housing crafted to attach to a wall outlet with a sturdy connection.

EXPANDED FUNCTIONALITY

Designed for use with future generation smart controllers and outlet devices to expand and enhance UIS service.



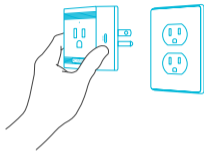
INSTANT ACCESS

10-foot L-shape extension cord allows for convenient placement and use when connecting the UIS single plug with external controllers.

POWERING AND SETUP

STEP 1

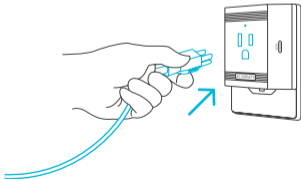
Plug the UIS Control Plug into a socket near your device.



STEP 2

Plug in your device to the UIS Control Plug. Confirm that your outlet device is compatible before usage (see page 4 for more information).

The indicator light will illuminate to confirm that the device is receiving power.

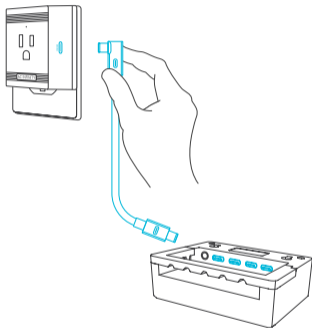


POWERING AND SETUP

STEP 3

From the port located on the right side of the plug, use the UIS Extension cord to connect the plug to your UIS Controller.

Refer to your controller's manual for further programming instructions.



CONTROLLER 69 shown (not included)

AC INFINITY PRODUCTS

Seedling Mats

The SUNCORE series is a line of seedling mats designed to improve germination success and accelerate your seeds' growth process by emitting steady heat. Each mat is lined with an innovative far-infrared film that provides even heating distribution.



Booster Duct Fans

An inline fan for duct boosting designed to improve airflow in heating and air conditioning applications, and ventilate home rooms like attics, workshops, bathrooms, and kitchens. Each fan uses an easy-to-use knob controller that adjusts fan speed for your specific airflow boosting needs.



CONTROLLER 69

The CONTROLLER 69 is the centerpiece of the Universal Infinity System, able to connect with our smart devices including fans and LED grow lights to create the optimal growing environment. Connects with up to four devices to provide independent programming while capable of dynamically adjusting fan speed and brightness intensity levels in response to temperature and humidity.



Discover the latest innovations in environmental controls at acinfinity.com

WARRANTY

This warranty program is our commitment to you, the product sold by AC Infinity will be free from defects in manufacturing for a period of two years from the date of purchase. If a product is found to have a defect in material or workmanship, we will take the appropriate actions defined in this warranty to resolve any issues.

The warranty program applies to any order, purchase, receipt, or use of any products sold by AC Infinity or our authorized dealerships. The program covers products that have become defective, malfunctioned, or expressively if the product becomes unusable. The warranty program goes into effect on the date of purchase. The program will expire two years from the date of purchase. If your product becomes defective during that period, AC Infinity will replace your product with a new one or issue you a full refund.

The warranty program does not cover abuse or misuse. This includes physical damage, submersion of the product in water, incorrect installation such as wrong voltage input, and misuse for any reason other than intended purposes. AC Infinity is not responsible for consequential loss or incidental damages of any nature caused by the product. We will not warrant damage from normal wear such as scratches and dings.

Contact our dealers department at dealers@acinfinity.com or (626) 838-4656 for more information about our dealers and distributors program. Contact our customer service department at support@acinfinity.com or 626-923-6399 for product and warranty assistance. Our business hours are Monday through Friday, 9:00 am to 5:00 pm PST.



COPYRIGHT © 2022 AC INFINITY INC. ALL RIGHTS RESERVED

No part of the materials including graphics or logos available in this booklet may be copied, photocopied, reproduced, translated or reduced to any electronic medium or machine readable form, in whole or in part, without specific permission from AC Infinity Inc.

www.acinfinity.com